

SENSORE ENTERS LITHIUM EXPLORATION EXCLUSIVITY AGREEMENT

SensOre Ltd is pleased to announce it has entered into an exclusivity agreement with Deutsche Rohstoff AG on joint exploration of lithium AI-targets in Western Australia.

These negotiations follow exciting results from SensOre's first lithium targeting runs completed in December 2021.

Headquartered and listed in Germany, Deutsche Rohstoff is focused on the investment in as well as identification, development and sale of attractive natural resources projects primarily in North America, Australia and Europe.

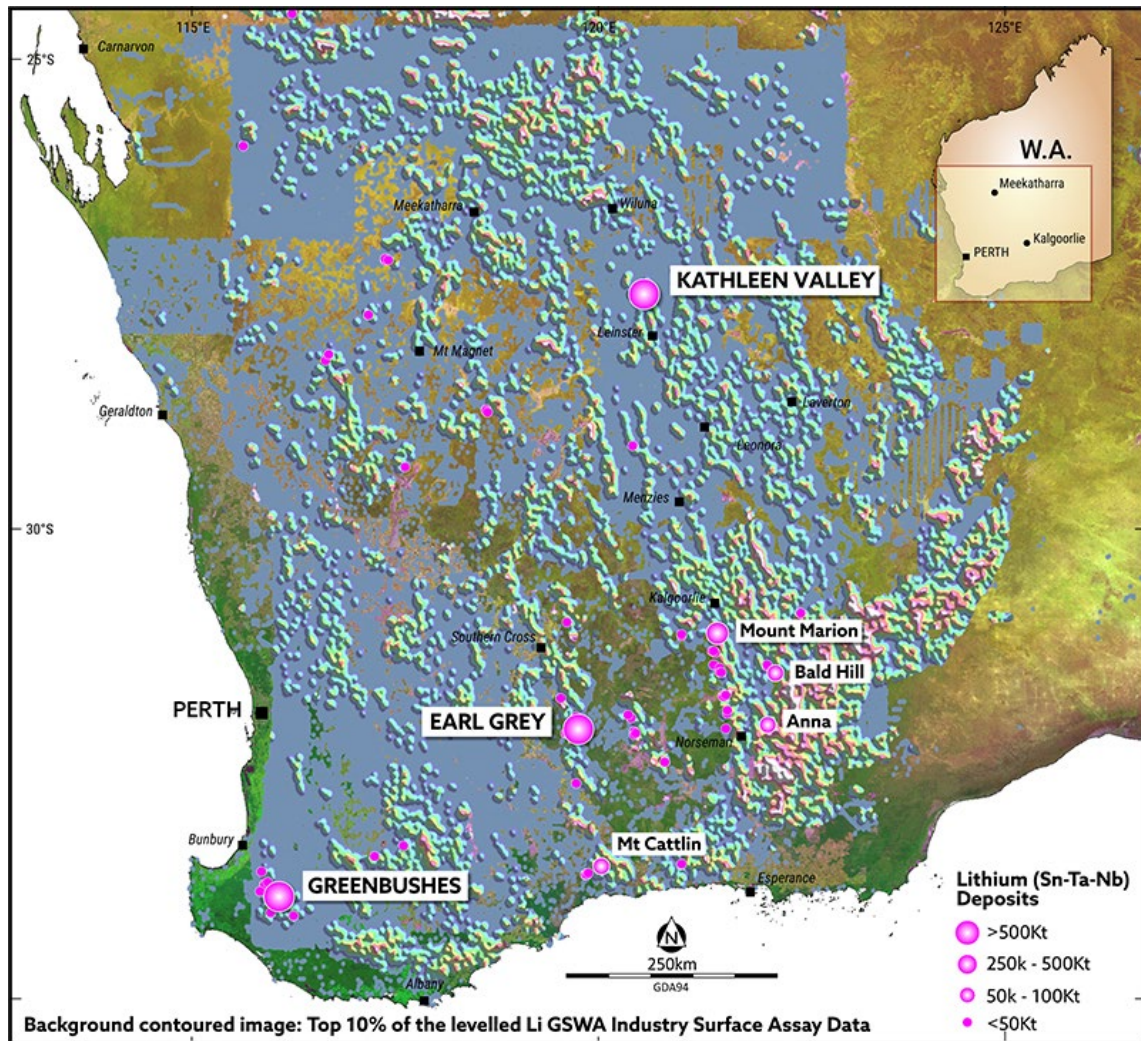


Figure 1: SensOre WA Data Cube, surface Lithium geochemistry December 2021

MEDIA ENQUIRIES

Richard Taylor

Chief Executive Officer

M +61 404 343 219

E richard.taylor@sensore.com.au

SensOre Ltd

ABN 16 637 198 531

Level 3, 10 Queen Street Melbourne VIC 3000 | t: +61 3 9492 3843

Unit 7, 5 Tully Road East Perth WA 6004 | t: +61 8 9221 9162



[sensore.com](https://www.sensore.com) | info@sensore.com



Proud member of:



ABOUT SENSORE

SensOre aims to become the top performing minerals targeting company in the world through the deployment of artificial intelligence and machine learning (ML) technologies, specifically its Discriminant Predictive Targeting® (DPT®) workflow. SensOre collects all available geological information in a terrane and places it in a multidimensional hypercube or data cube. SensOre's big data approach allows DPT predictive analytics to accurately predict known endowment and generate targets for further discovery.

The SensOre Group has built a tenement portfolio of highly prospective, wholly-owned and joint ventured technology metals tenement packages located in Western Australia. As the capacity of SensOre's AI technologies expand to new terranes and a broader range of commodities, the Company anticipates that new targets will be identified and acquired in Australia and internationally.

SensOre's DPT technology has been developed over many years and involves the application of new computer assisted statistical approaches and ML techniques across the workflow of mineral exploration. The workflow includes data acquisition, data processing, ML training, ML prediction and analysis through DPT. SensOre has acquired numerous data sets and used these to generate mineral system targets. Targets have been analysed and vetted by SensOre's experienced exploration geoscientists. Publicly available data in the form of geophysics, surface geochemical, drilling and geological layers and derivatives have been compiled into a massive data cube covering much of Western Australia. SensOre believes that the combination of big data and ML techniques will provide the next generation of exploration discovery.